

**Titan**<sup>®</sup>  
Rockbit

# TITAN EK68

**TITAN EK68 SHOTCRETE MAKİNASI**

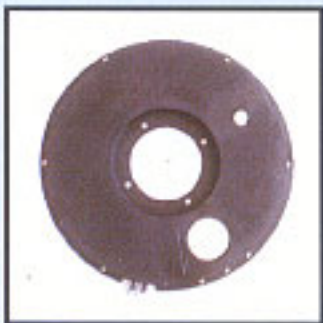
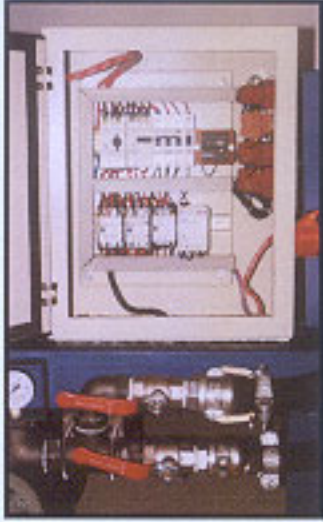
**TITAN EK68 DRY SHOTCRETE UNIT**



Titan Ltd. Şti. Keresteciler Sitesi F-Blok No:4 226. Sokak, 06370 Ostim - Ankara - Turkey

Tel: 90 (312) 385 56 08 (3 Lines) - 90 (312) 354 63 69, Fax: 90 (312) 385 56 11

E-Mail: [titanltd@celik.net.tr](mailto:titanltd@celik.net.tr) - Website: [www.titanltd.com.tr](http://www.titanltd.com.tr)



TEKNİK ÖZELLİKLER - TECHNICAL DATA

Ebat (En-Boy-Yükseklik) Size (Width-Length-Height)	sm cm	115x156x120
Ağırlık Weight	kg	620
Rotor Kapasitesi Rotor Capacity	lt l	11
Teorik Püskürtme Kapasitesi Theoretical Conveying Capacity	m <sup>3</sup> /saat m <sup>3</sup> /h	9.5
*Pratik Püskürtme Kapasitesi *Practical Conveying Capacity	m <sup>3</sup> /saat m <sup>3</sup> /h	6
Hortum Çapı Hose Diameter	mm	65/85
Hava Tüketimi Air Consumption	m <sup>3</sup> /dak m <sup>3</sup> /min	9-13 (6 bar basınçta) 9-13 (at 6 bar)
Maksimum Agregat Ebadı Max. Aggregate	mm	20
Voltaj Voltage		380 V / 50 Hz
Motor Kuvveti Electrical Motor	kW	7.5
Elektrikli Vibratör Electrical Vibrator		0.12 kW - 50 Hz - 62.5 kg
Faz Koruyucu Protection		Entes MK3

\* Pratik püskürtme kapasitesi: 4-9 m<sup>3</sup>/saat olacak şekilde tadilat yapılabilir.

\* Practical conveying capacity can be 4-9 m<sup>3</sup>/hr upon request.